



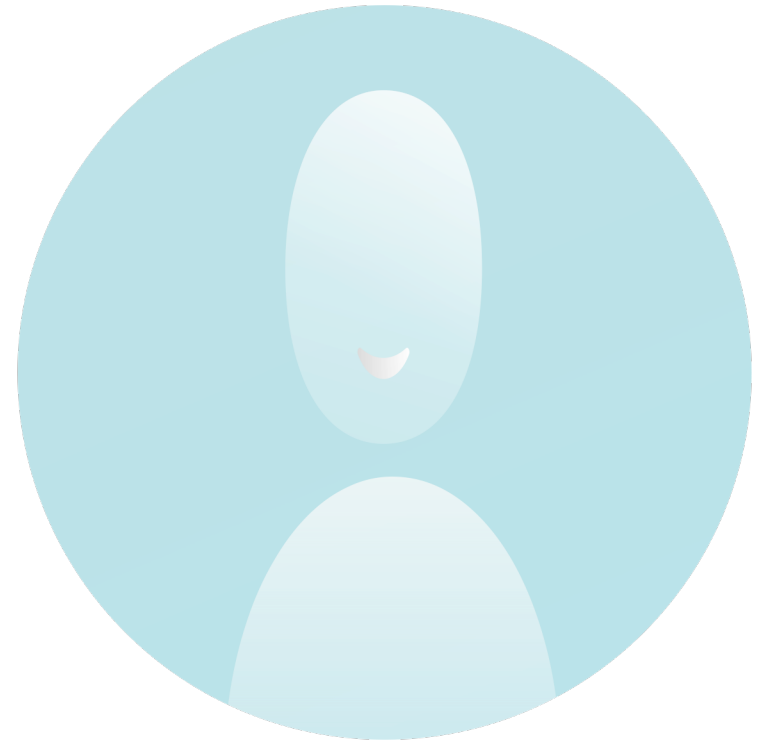
SAFA? YTN?
TEK?
Akava?





Does joining make you a socialist anarchist?

Who you gonna call?

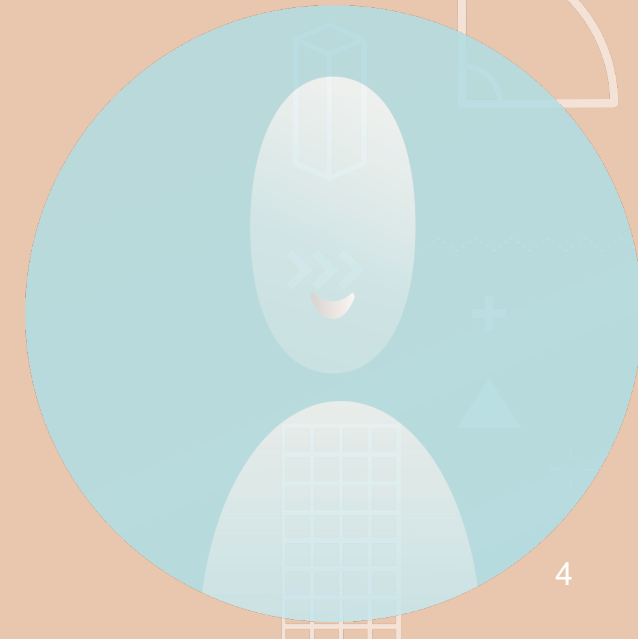


Salary (median)

4 832 €/month

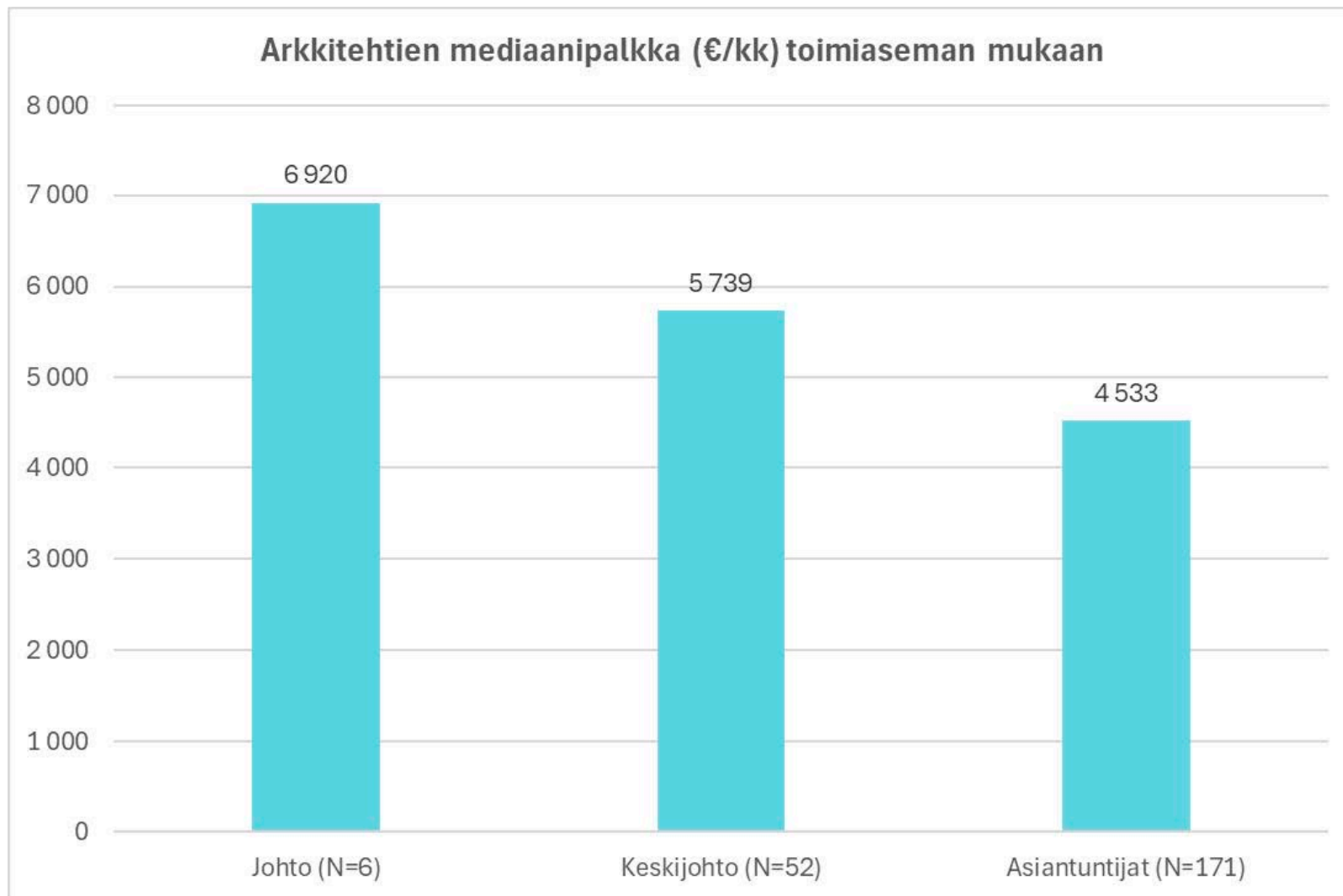
Salary (average)

5089 €/month

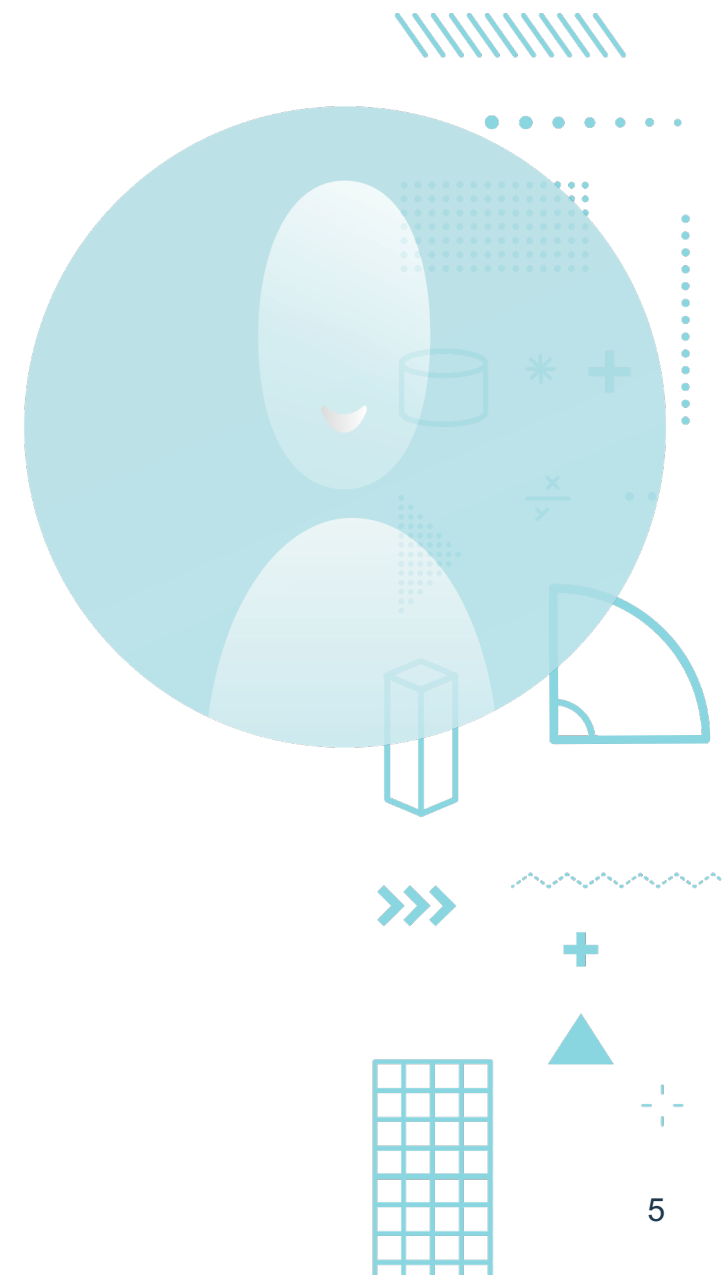


Architects' salaries by position

(Source: TEK labour market survey 2023)



 www.tek.fi/salary-surveyor



Gross salaries

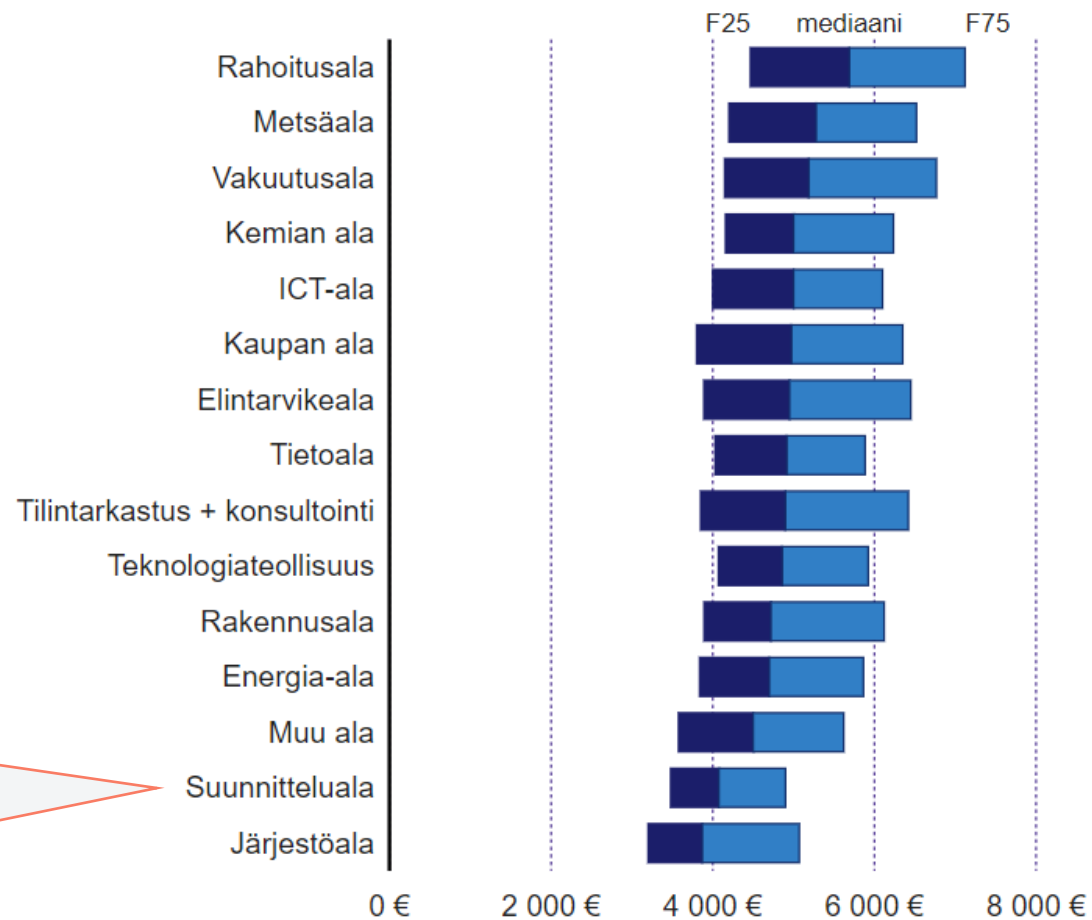
Alakvartiili (F25), mediaani ja yläkvartiili (F75)

2022

Lähde: YTN-data 2022

Architects in private
sector

Median salary 4500
€/kk€/kk



Why are collective agreements important?

Holiday bonus

Sick leave pay after the first nine days,

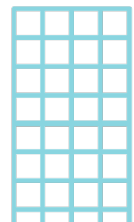
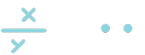
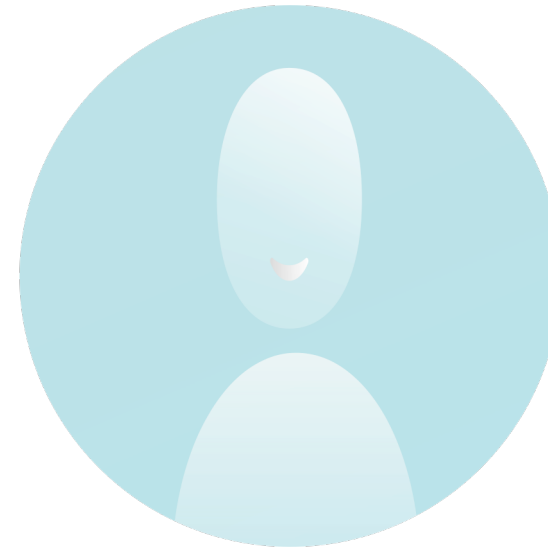
General salary increases

Compensation for travelling expenses

Paid parental leave

Possibility to care for a sick child at home for some days without a loss of salary

A 7.5-hour working day instead of 8 hours





Most valuable benefits for you

- Employment advice and legal services
- Salary statistics and advice
- Career and job search services

TEK's head office is located in Helsinki. Our local work life experts are at your service in Tampere, Turku, Oulu and Lappeenranta.

Information, inspiration and network S

- Professional magazines and TEK magazine (in Finnish)
- Events and webinars
- Online courses
- Mentoring
- TEK Lounges at Helsinki, Turku, Tampere and Lappeenranta



Membership is worth the benefits!

- Housing loan and other bank service benefits from Danske Bank
- Benefits for travel, home and family insurances from Pohjola Vakuutus
- Finland's most affordable life insurance from Kaleva
- Rental cottages around Finland (find these in Memberplus.fi)
- Benefits and discounts for travel and wellbeing at Member+ portal (in Finnish)



Become a member of TEK too!

- For SAFA members, there is no extra cost for dual membership of TEK. You just have to inform SAFA yourself that you also want to be a member of TEK.

<https://www.safa.fi/en/safa-membership/>

www.tek.fi/services

